



**沥青搅拌设备专业制造商**  
PROFESSIONAL ASPHALT MIXING PLANT MANUFACTURER

**承军魂智创先机 让道路自由畅通**  
Inherit the soul of the military to create opportunities,  
make the road free and unimpeded

南阳市亚龙筑路机械制造有限公司  
地址：河南省南阳市卧龙路十二里河段南侧  
邮编：473000  
电话：0377-63528196 13937767680  
传真：0377-63528100 63528123  
邮箱：nyylzj@126.com  
网址：<http://www.nyylzj.cn/>

Nanyang Yalong Road Construction Machinery Co., Ltd  
Address: South side reach 12-mile Wolong Road, Nanyang city  
Postal Code: 473000  
Tel: (86--377)63528196 13937767680  
Fax: (86--377)63528100 63528123  
E-mail: nyylzj@126.com  
Website: <http://www.nyylzj.cn/>



**南阳市亚龙筑路机械制造有限公司**  
Nanyang Yalong Road Construction Machinery Co., Ltd  
(原中国建筑第七工程局机械厂)  
(Former machinery works of China Construction Seventh Engineering Division)



沥青搅拌设备专业制造商  
PROFESSIONAL ASPHALT MIXING PLANT MANUFACTURER



公司主要研发生产沥青混合料搅拌及再生设备、稳定土厂拌设备、水泥混凝土搅拌设备等大型公路施工与建设设备，国内最早研发生产城市环保型沥青混合料搅拌设备和整体式沥青混合料再生设备，参与《强制间歇式沥青混合料搅拌设备》标准、《沥青混合料厂拌热再生设备》标准、《沥青混合料搅拌设备环保排放限值》标准的起草和修订。公司产品获得20余项省部级科技成果奖和40余项国家专利，产品荣获“河南省优质产品”、“河南省名牌产品”、“中国道路机械卓越品牌”等荣誉称号。

The Company develops and produces mass produces large-scale highway construction and engineering construction equipment, such as asphalt mixing and recycling equipment, stabilized soil mixing equipment, and concrete mixing equipment. The Company is China's first to produce environmental-friendly asphalt mixing equipment and integrated asphalt recycling equipment. In 2016, it participated in drafting Forced Intermittent Asphalt Mixing Equipment Standards, Asphalt Plant Hot Recycling Equipment Standards as well as Asphalt Mixing Equipment Emission Limits Standards. It has acquired over 20 provincial and ministerial awards for scientific and technological achievements and more than 40 national patents; its products are honored as "Quality Product of Henan Province", "Famous Brand of Henan Province" and an "Excellent Brand of Chinese Road Machinery"

“诚实守信、合作共赢”，凭借一流的产品和优质的服务，亚龙筑机与国内外客商建立了稳固的战略合作关系，目前有1300余套沥青搅拌设备、400余套稳定土厂拌设备、100余套水泥混凝土搅拌设备，服务于国内外工程建设领域，其中包含整体式沥青混合料再生设备30余套、城市环保型沥青混合料搅拌设备40余套，连续五年荣获“中国沥青搅拌设备关注度十强”。亚龙筑机先后远销乍得、外蒙古、新西兰、乌兹别克斯坦、印度、肯尼亚、坦桑尼亚、埃塞俄比亚、俄罗斯、巴基斯坦、缅甸、泰国、菲律宾等20多个国家，并与国内外多家公司建立贸易合作关系。

It follows the principle of "Honest and Faith Oriented Cooperation for Mutual Benefits" and offers high-quality products and premium services, so now YLRM has established firm cooperative relationships with domestic and foreign business partners. At present, there have been more than 1,300 sets of asphalt mixing equipment, around 400 sets of stabilized soil mixing equipment and over 100 sets of cement mixing machines that are applied in engineering construction field at home and abroad, including over 30 sets of integrated type asphalt mixture recycling equipment and 40 sets of eco-friendly asphalt mixing equipment. YLRM products have been awarded as the "Top Ten Asphalt Mixing Equipment in China" for five consecutive years. YLRM products are exported to over 20 countries, including Chad, Outer Mongolia, New Zealand, Uzbekistan, India, Kenya, Tanzania, Ethiopia, Russia, Pakistan, Myanmar, Thailand and Philippines, and YLRM has established trade relationship with many enterprises at home and abroad.

承军魂智创先机，让道路自由畅通，亚龙筑机公司期待与您携手同行！

Inherit the advanced opportunity of military spirit, make the road free and unblocked, Yalong road construction machinery looking forward to company with you together.

## 公司简介 Company Profile

南阳市亚龙筑路机械制造有限公司，是中国建筑集团旗下筑路机械专业制造商，前身是中国人民解放军基本建设工程兵第21支队修配厂；1983年兵改工，1987年改为中国建筑第七工程局机械厂；2005年企业改制，成立南阳市亚龙筑路机械制造有限公司。有近50年的军工制造历史，集研发、制造、销售、服务于一体的国家高新技术企业，中原地区最大的筑路机械专业制造商、中国工程机械工业协会筑养路机械分会优秀会员企业、中国沥青搅拌设备高峰论坛成员单位、筑路机械分会全国筑养路机械行业职业教育联合培训基地。公司先后通过质量、环境、职业健康安全管理体系认证，欧盟CE认证，俄罗斯GOST认证，是“河南省级企业技术中心”、“南阳市高精度自动控制研究中心”。

Nanyang Yalong Road Construction Machinery Co., Ltd is a professional machinery manufacturer subordinated to China State Construction. It was formerly the 21st Detachment Repair Plant of PLA Capital Construction Engineer Units; in 1983, it was reformed into a state-owned enterprise; in 1987, it was transformed into Machinery Factory of China Construction the 7th Engineering Division; in 2005, the Company was renamed as Nanyang Yalong Road Construction Machinery Co., Ltd after restructuring. It has a nearly 50-year experience in military manufacturing and now it has become one of national high-tech enterprises that integrate R&D, manufacturing, sales and services. It is also the largest road construction machinery manufacturer in Henan Province, China, and an excellent member of Road Construction Sub-branch of China Construction Machinery Association, also a member of China Asphalt Plant Industry Summit and a training base for vocational education in National Road Construction and Maintenance Machinery Industry of Road Construction Sub-branch. The Company has passed Quality Control System Certification, Environmental Management System Certification, Occupational Health Safety Management System Certification, the European Union CE Certification, and Russia GOST Certification. It is also certified as "Henan Provincial Enterprise Technology Center", and "Nanyang High-precision Automatic Control Research Center".

## 资质荣誉 Qualification honor



# 承军魂智创先机 让道路自由畅通

Inherit the soul of the military to create oppprtuninies,  
make the road free and unimpeded



沥青搅拌设备专业制造商  
PROFESSIONAL ASPHALT MIXING PLANT MANUFACTURER

## 梦想的足迹

——回顾亚龙公司发展之路  
感受改变世界微薄之力

1971年，二十一支队组成修理区队；  
1981年，修理区队更名为修配厂；  
1983年，兵改工为中建七局第四建筑工程公司修配厂；  
1984年，更名为中国建筑第七工程局修造厂；  
1987年，更名为中国建筑第七工程局机械厂；  
1989年，第一套沥青搅拌设备成功应用于山东；  
1992年，第一套煤粉燃烧装置获得国家专利；  
1998年，第一套移动式稳定土厂拌设备、LJ1500型沥青混凝土搅拌设备研发成功；  
2004年，亚龙牌沥青混合料搅拌设备，获得“河南省优质产品”荣誉称号；  
2005年，企业改制，成立股份制公司：南阳市亚龙筑路机械制造有限公司；  
2006年，HXB4000型沥青混合料搅拌设备研发成功；  
2007年，LB1500型沥青混合料搅拌设备远销非洲乍得，成功开辟国外市场；  
煤粉燃烧器荣获“全国燃烧器十佳知名品牌”荣誉称号；  
2011年，亚龙公司成为“高新技术企业”；  
2012年，RAP系列沥青混合料再生设备成功推向市场；  
2013年，强制间歇式沥青混合料搅拌设备荣获“河南省名牌产品”、“中国沥青搅拌设备关注度十强”荣誉称号；  
2014年，公司荣获“感动30年—中国道路机械卓越品牌”荣誉称号；  
沥青混合料温拌再生设备、沥青温拌发泡系统获得国家发明专利；  
2015年，多功能烘干筒获得国家发明专利；  
阶梯搅拌稳定土厂拌设备、燃油燃烧器成功下线；  
2016年，亚龙商标被认定为“河南省著名商标”；  
城市环保型沥青混合料搅拌设备、燃气燃烧器研发成功；  
环保型阶梯搅拌稳定土厂拌设备和整体式沥青混合料再生设备成功推向市场；  
参与《沥青混合料厂拌热再生设备》标准、《强制间歇式沥青混合料搅拌设备》标准修订；  
2017年，响应国家“一带一路”战略倡议，10多套大型沥青混合料搅拌设备、稳定土厂拌设备应用于巴基斯坦PKM高速公路建设；  
2018年，在“一带一路”沿线的深度合作中，近20多套沥青混合料搅拌设备、稳定土厂拌设备应用于缅甸、坦桑尼亚公路基础设施建设；  
参与《沥青混合料搅拌设备环保排放限值》标准的起草。

## Dream Footprint

- A Review of Yalong's Path to Success  
The Strength to Change the World

In 1971, 21st Detachment was reformed into a Repair Detachment;  
In 1981, the sub-repair Detachment was renamed as Repair Plant;  
In 1983, it was reformed into Repair Plant of the 4th Construction Company affiliated to the 7th Division of China State Construction;  
In 1984, it was renamed as Repair workshop of the 7th Division of China Construction Group;  
In 1987, it was renamed as Machinery Factory of the 7th Division of China Construction;  
In 1989, the first asphalt mixing equipment was successfully applied in Shandong Province;  
In 1992, it acquired a patent for the first set of pulverized coal combustion device it developed;  
In 1998, the first set of mobile type stabilized soil mixing equipment and LJ1500 asphalt mixing equipment were successfully developed consecutively;  
In 2004, "Yalong" -branded asphalt mixing equipment was honored as "Quality Product of Henan Province" ;  
In 2005, it followed national call and reformed into Nanyang Yalong Road Construction Machinery Co., Ltd;  
In 2006, HXB4000 asphalt mixing equipment was successfully developed;  
In 2007, LB1500 asphalt mixing equipment was exported to Chad, which symbolized its successful tapping into overseas market;  
In the same year, pulverized coal burner was awarded "Top Ten Burners in China" ;  
In 2011, Yalong Company was categorized as "High-Tech Enterprise" ;  
In 2012, RAP series asphalt mixture recycling equipment was successfully launched on the market;  
In 2013, Forced Intermittent Asphalt Mixing Equipment was awarded "Famous Brand of Henan Province" and "Top Ten Asphalt Mixing Equipment in China" ;  
In 2014, Yalong Company was honored the title of "30 Touching Years - Outstanding Brand of Chinese Road Machinery" ;  
Asphalt mixture warm recycling equipment and asphalt warm mixing forming system were patented;  
In 2015, Multi-function drying apparatus was patented for an invention;  
Besides, stepped stabilized soil mixing equipment and fuel burner were successfully launched on the market;  
In 2016, Yalong trademark was rated as "Famous Trademark in Henan Province" ;  
Eco-friendly asphalt mixing equipment and gas burner were successfully developed;  
Eco-friendly stepped stabilized soil mixing equipment and integrated asphalt mixture recycling equipment were successfully marketed;  
In the same year, Yalong Company participated in drafting Asphalt Plant Hot Recycling Equipment Standards and Forced Intermittent Asphalt Mixing Equipment Standards;  
In 2017, Yalong followed the Belt and Road initiative and applied more than 10 sets of large asphalt mixing equipment and stabilized soil mixing equipment in building PKM highway of Pakistan;  
In 2018, as the Belt and Road - based cooperation deepened, nearly 20 sets of asphalt mixing equipment and stabilized soil mixing equipment were transported to Burma and Tanzania for road construction;  
In the same year, Yalong participated in drafting Asphalt Mixing Equipment Emission Limits Standards.



绿色·再生·节能  
Green · Regeneration · Energy Saving

1971年

1981年

1984年

1987年

1989年

1992年

1994年

1998年

2004年

2006年

2007年

2012年

2015年

2016年

2018年

# ZHXB(H)系列整体式沥青混合料再生设备

## ZHXB(H) Series Integrated Asphalt Mixture Recycling Equipment



沥青搅拌设备专业制造商  
PROFESSIONAL ASPHALT MIXING PLANT MANUFACTURER

原生、再生、泡沫沥青温拌，环保一体化设计；超大搅拌锅位于再生楼下部，再生料可大比例添加，杜绝粘结；

设备关键技术先后取得多项发明专利，沥青混合料温拌再生技术及设备荣获“河南省科技进步奖”“河南省百项职工优秀技术创新成果”。

Original, recycling and foaming asphalt warm mixing, Eco-friendly integrated design; super-large agitator kettle are located at lower recycling building, anti-cohesive, high-proportional adding of mixture;

Yalong's key technologies acquired several invention patents, among which, asphalt mixture warm mixing and recycling equipment as well as the technology are granted "Science and Technology Progress Award of Henan Province" and titled as one of "100 Scientific and Technological Achievements Made by Henan Workers".

### 设备技术参数 Equipment technical parameters

型号 Type	ZHXB/ZSLB/ZLB2000	ZHXB/ZSLB/ZLB3000	ZHXB/ZSLB/ZLB4000
生产能力 Production Capacity	160t/h	240t/h	320t/h
回收系统 Recovery system	RAP1000	RAP1500	RAP2000
最大回收料添加量 Maximum additive amount of reclaimed materials	80% (组合 Combination) : 30% (冷添加 Cold addition) / 50% (热添加 Hot addition)		
回收料斗数量 Number of hopper recovered	2+1 (也可根据客户需求 According to customers' requirements)		
回收料斗容积 Volume of hopper recovered	12m <sup>3</sup>		
再生滚筒型号 Model of regenerated roller	2280	2510	2512
5%含水率时最大回收料烘干能力 Maximum drying capacity of reclaimed materials when moisture content is 5%	80t/h	120t/h	160t/h
再生燃烧器功率 Burner power	7MW	10.5MW	14MW
燃料 Fuel	天然气 Natural gas、轻油 light oil、重油 heavy oil		
过滤面积 Filtering area	854m <sup>2</sup>	1046m <sup>2</sup>	1340m <sup>2</sup>
再生料计量称 Measurement scale of regenerated materials	2.5t	3.5t	4.5t
原生冷料斗容积 Volume of cold hopper	8m <sup>3</sup> × 5	12m <sup>3</sup> × 6	15m <sup>3</sup> × 6
原生烘干筒型号 Type of drying cylinder	2285	2590	2811
原生燃烧器功率 Burner power	14MW	21MW	28MW
搅拌能力 Type of mixing bowl	3t/锅	4t/锅	5t/锅
成品料仓容积 Volume of finished product bin	40T/80T	50T/100T	50T/100T
沥青供给系统 Asphalt feeding system	沥青罐50t × 2	沥青罐50t × 3	沥青罐50t × 4



### ★原生、再生一体化设计

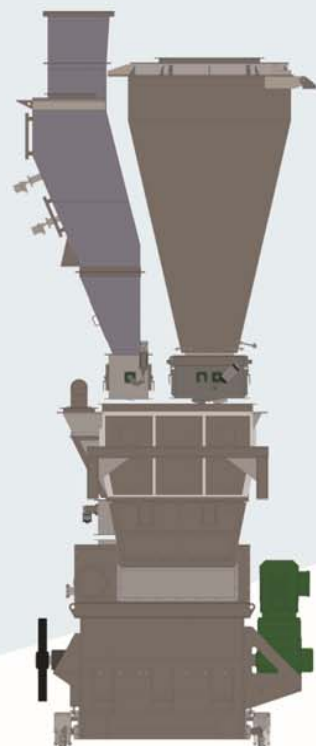
#### Integrated Design of Original and Recycling Mixture

- 原生、再生融为一体，完全颠覆传统技术：原生料耐磨溜槽，再生料重力下沉进入搅拌缸，解决再生料粘附溜道顽疾。

The integration of original and recycling mixture completely overturns traditional techniques: the anti-wear original mixture is transported through chute; recycling mixture sinks into agitator tank by gravity; the long-existed recycling mixture cohesive problem is gone for good.



一体化结构  
Integrated structure



再生料重力下沉、原生料耐磨溜槽  
Recycling mixture sinks by gravity and anti-wear original mixture flows through chute



高比例再生（冷热料同时添加）  
High-proportion Recycling  
(simultaneously adding of cold and hot mixture)

### ★高比例再生（添加比例80%）

#### High-rate Recycling (with a ratio of 80%)

- 超大搅拌缸设计，再生料冷、热添加任意选择，可实现再生料80%的大比例添加。

The agitator tank is super large, ensures freely adding of cold and hot recycling mixture, the adding proportion of recycling mixture reaches 80%.

### ★绿色环保 Green and Eco-Friendly

- 绿色搅拌工厂设计，有效处理粉尘、烟尘、噪音、异味等污染，各项排放指标优于行业标准。

The green agitating plant can efficiently deal with dust, smoke, noise and odor, and emission indexes are ahead of the industry.



### ★个性化设计 Personalized Design

- 根据客户需求不同，可配置破碎筛分生产线、再生料外加剂、泡沫沥青、彩色沥青等，灵活高效，性价比比高。

Customized configuration to satisfy customer's need, like crushing and screening line, recycling mixture additive, foaming asphalt, colored asphalt and the like, flexible, high efficient and high cost ratio.



破碎筛分生产线，柔性破碎，高频筛分，避免回收料级配的二次破坏  
Crushing and screening production line, flexible crushing, and high-frequency screening help prevent secondary damage to reclaimed materials grading.

### 沥青发泡装置 Asphalt foaming machine

高压水雾与高温沥青在混合器内快速发泡，增加混合料的和易性，实现泡沫沥青温拌，降低混合料拌合温度20~30℃，节省燃料消耗15%~30%，减少排放、节能环保。

High-pressure water mist and high temperature asphalt rapidly foam in the mixer, which increases the peaceability of the mixture, realizes warm mixing of foamed asphalt, reduces the mixing temperature of the mixture by 20° C-30° C, saves fuel consumption by 15% to 30%, reduces emission of asphalt fume, and saves energy and protects the environment.



高压水雾化喷嘴  
High pressure atomizing nozzle

# HXB/SLB/LB (H) 系列沥青混合料搅拌设备

## HXB/SLB/LB(H) series asphalt mixture mixing equipment



沥青搅拌设备专业制造商  
PROFESSIONAL ASPHALT MIXING PLANT MANUFACTURER

### 设备技术参数 Equipment technical parameters

型号 Type	500	1000	1500	2000	3000	4000	5000
额定生产能力 (t/h) Capacity rating	40	80	120	160	240	320	400
装机功率 (kW) Installed power	186	307	404	546	658	876	1155
干燥滚筒驱动 (kW) Drying roller drive	2×7.5	4×5.5	4×11	4×15	4×22	4×30	4×45
燃烧器 Burner (MW)	3.6	7	10.6	14	21	28	33
燃料 Fuel	柴油、重油、天然气、煤气、液化气、煤粉 Diesel, heavy oil, natural gas, coal gas, liquefied gas, pulverized coal						
引风机功率 (kW) Induced draft fan power	30	55	75	110	132	185	2×132
过滤面积 Filter area (m <sup>2</sup> )	260	420	510	620	1080	1212	1600
振动筛 (层) Vibrating screen (layer)	4	4	4	5	5	6	6
热料仓 (m <sup>3</sup> ) Hot aggregate bin	9.5	9.5	14	30	80	85	90
最大搅拌能力 (kg) Rated stirring capacity	600	1200	1700	2300	3300	4500	5400
成品料仓 (m <sup>3</sup> ) Finished product bin	17	17	28	28	33	44	55
沥青罐 Asphalt tank (m <sup>3</sup> )	50 (40)	50 (40)	50 (40)	2×50 (40)	3×50	4×50	4×50
重油罐 Heavy oil tank (m <sup>3</sup> )	50 (40)	50 (40)	50 (40)	1×50 (40)	1×50	1×50	2×50
导热油炉 (kcal/h) Thermal oil furnace	30×10 <sup>4</sup>	30×10 <sup>4</sup>	50×10 <sup>4</sup>	50×10 <sup>4</sup>	75×10 <sup>4</sup>	130×10 <sup>4</sup>	130×10 <sup>4</sup>



### ★超大产能 Huge production capacity

- 搅拌系统超越行业产能标准10%–12%的超能设计，最大限度发挥设备效能；  
The production capacity of stirring system is designed over 10%–12% of the production capacity standard in this industry, so as to maximize the effectiveness of the equipment;
- 高效搅拌：物料沿轴向、径向、切向三维循环涡旋翻搅，搅拌更快速、更高效。  
High-efficiency mixing: materials are stirred in a 3D cyclic and vortex way in axial, radial, and tangential directions, making the mixing to be fast and efficient.



### ★高效节能 High efficiency and energy saving

- 烘干筒专利动力驱动，高效扬料板，功率消耗低，热交换效率高；  
Drying cylinder patented power drive, highly efficient lifting board, low power consumption, high combustion efficiency;
- 燃料、空气独立计量PLC自动控制，最先进燃烧技术，燃烧效率更高。  
Automatic control of fuel and air independent measurement PLC, with advanced combustion technology and higher combustion efficiency.



### ★超高精度 Super-high precision

- 沥青采用动态精确控制二次计量技术，骨料非对称大小门，落差自动修正，油石比误差 ≤0.1%。  
Asphalt measurement adopts secondary measurement technology with precise dynamics control, aggregate has asymmetric big and small door structure, and drop height can be corrected automatically, with error of oil to stone ratio ≤0.1%.

精确计量非对称大小门结构  
Precise measurement of asymmetric big and small door structure

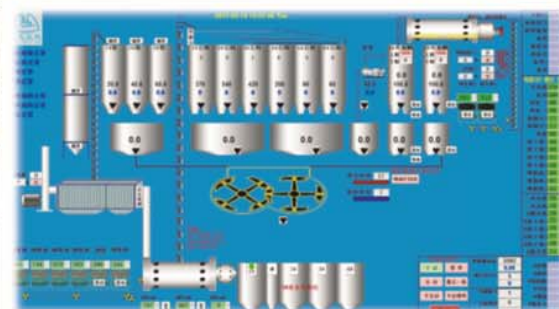


### ★超级安全 Super-safety

- 自动检测报警、紧急处理、安全连锁设计，自动张紧、止逆装置，确保使用安全；  
Automatic detection alarm, emergency treatment, and safety interlock design, automatic take-up and backstop devices, ensuring safe use;
- 减速机、电器原件、气动元件、轴承采用免维护进口部件，运行更可靠。  
Imported parts are used for the reducing gear, electrical components, pneumatic components, and bearings, making operations to be more reliable.

检测报警，安全连锁，  
超级安全

Detection alarm, safety  
interlock, and super-safety  
and small door structure



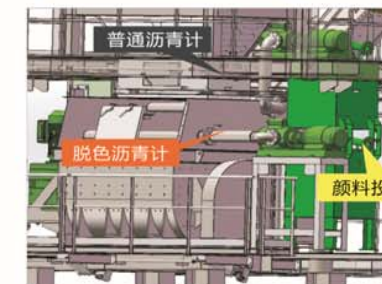
### ★超低排放 Ultra-low emissions

- 多项防尘、降噪措施，粉尘排放 ≤20mg/Nm<sup>3</sup>，林格曼黑度 I 级。  
A lot of measures for dust prevention, and noise reduction; dust emission ≤20mg/Nm<sup>3</sup>; Ringelman Emittance is at Level I.



### ★超全服务 Comprehensive service

- “积木式”结构布局，满足客户个性化需求；预留各类接口，便于产品升级；提供成套燃气服务与设备；提供远程系统调试、操作与维护。  
“Modular construction” layout meets customers' personalized requirements; reserve interfaces in various types to facilitate product upgrade; provide complete sets of gas services and equipment; provide remote system debugging, operation, and maintenance.

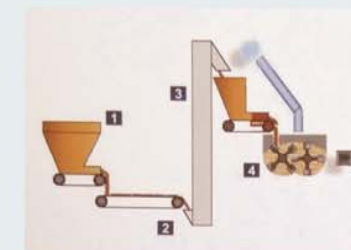


### ★其他再生方案

多种再生形式，满足个性化需求。

Other recycling schemes A variety of recycling forms meet individual requirements.

- 冷添加再生（添加比例20%）  
Cold addition recycling (with a ratio of 20%)  
低投资成本，高投资回报率，0–20%再生率  
能满足部分施工要求。  
Low investment cost and high investment return rate; recycling rate of 0–20% can meet part of construction requirements.



- 多功能滚筒热添加（添加比例30%–40%）  
Multifunction roller heat addition (with a ratio of 30%–40%)  
新型DGT系列多功能滚筒，可烘干新料，也可将新料和铣刨料混合烘干加热，设备和资金投入少，运行成本低。  
New-type DGT series multifunction roller can be used for drying new materials.drying new materials. It can also dry and heat new materials and milling materials in a mixed way. Equipment and funding are low, and therefore the operation cost is low.



- 双滚筒热添加（添加比例30%~80%）  
Double-roller cold and heat addition (with a ratio of 30%–80%)  
双滚筒热添加、冷热同时添加，添加方式任意选择，可实现高比例再生。  
Double-roller heat addition and simultaneous cold & heat addition are optional. A high proportion of recycling and high economic.



★ 环保措施 全方位环保处理，排放优于行业标准  
Environmental protection measures

Comprehensive environmental protection with emission standards better than industry standards

• 减尘收尘 Dust reduction and dust collection:

冷料系统独立除尘（雷达感应、干雾抑尘及自动抽风、防尘软帘系统）；  
车道密封（自动卷帘门、加长车道、干雾抑尘）。

Independent dust removal using a cold material system (radar induction, dry fog used for fog stopping, automatic draught and dust-proof soft curtain system);

Driveway seal (automatic rolling door, extended lane, dry fog stopping).



水雾喷淋  
Water spray



雷达感应装置  
Radar induction device



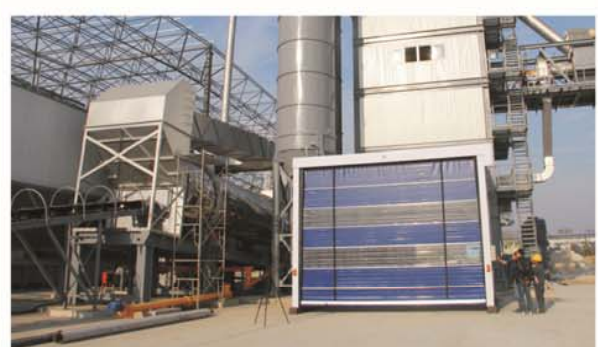
防尘软帘  
Dust prevention soft curtain



雷达自动感应抽风系统、半下沉或地垄式结构  
Radar automatic-induction exhausting system and half sinking or ridge type structure



全封闭装车区  
Full-closed loading area



自动卷帘门  
Automatic rolling shutter door

• 降解沥青烟 Degradation of asphalt smoke

多种沥青烟处理措施，可灵活选择；A variety of asphalt smoke treatment measures (flexibly selective);

干燥滚筒沥青烟回烧；

Drying roller asphalt fume burning;

粉裹烟吸附系统；

Smoke absorption system;

洗涤、等离子光解、炭吸附等多级处理系统。

Washing, plasma photolysis, and carbon adsorption multistage processing system.



沥青烟回烧  
asphalt fume burning



粉裹烟吸附  
Smoke absorption



沥青烟处理系统  
Asphalt fume treatment system

• 减噪降噪 Noise reduction

全方位降噪处理，环境噪声低于标准要求。  
Comprehensive noise reduction processing. Environmental noise is lower than the standard requirements.



引风系统变频风机和消音器  
Air induction system frequency conversion fan and silencer



动力气源低噪声螺杆式空压机，  
配置特制消噪室  
Low-noise rotary screw air compressor with power source, equipped with a special noise cancellation room



阻尼结构，低噪高效  
Damping structure, low noise, and high efficiency



全密封负压拌合楼，配置完善照明和人性化结构  
Fully sealed negative pressure mixing building, equipped with perfect lighting and humanized structure

• 废弃物处理 Waste treatment

溢料、废料统一收集存储，回收粉，可再利用或加湿排放。  
Spills and wastes are collected and stored in a unified manner. Dust-removing and recycling powders can be recycled or humidified.



废粉加湿排放  
Waste powder is humidified and then discharged



## YLB系列移动式沥青混合料搅拌设备

YLB series mobile asphalt mixture mixing equipment



- 强制间歇式拌合工艺，生产各类沥青混合料；
  - 设备配置移动单元，结构紧凑，安装快捷，转场方便；
  - 控制系统集中控制，操作灵活、方便、可靠。
- The forced intermittent mixing process is adopted to produce various types of asphalt mixtures;
  - The equipment is equipped with mobile devices, compact in structure, easy for transition, and convenient in installation;
  - The control system uses integrated control mode with flexible, convenient and reliable operation.

## DHB系列连续移动式沥青混合料搅拌设备

DHB series continuous mobile asphalt mixture mixing equipment

- 进出料流连续的搅拌工艺；
- 原材料的配比通过冷料的调整来控制，混合料的搅拌在滚筒内连续进行；
- 设备配置移动单元，结构紧凑，安装快捷；
- 设备进场后5-7天即可投入生产，2天便可完全撤离现场。



### 设备技术参数 Equipment technical parameters

型号 Type	YLB500	YLB1000	YLB1500	YLB2000
额定生产能力Capacity rating ( t/h )	40	80	120	160
装机功率Installed power ( kW )	186	306.65	403.7	546.4



### 设备技术参数 Equipment technical parameters

型号 Type	DHB25	DHB40	DHB60	DHB80	DHB100
额定生产能力Capacity rating ( t/h )	25~30	40~50	60~70	80~90	100~120
装机功率Installed power ( kW )	50	75	123	140	160



## JWBC/WBC (H) 系列稳定土厂拌设备

JWBC/WBC(H) series stabilized soil mixing equipment

### 设备技术参数 Equipment technical parameters

型号 Type	WBC300	WBC400	WBC/JWBC500	WBC/JWBC600	WBC/JWBC800	WBC1000
额定生产能力 Capacity rating (t/h)	300	400	500	600	800	1000
装机功率 Installed power (kW)	110	117.5	134.5/228.5	174.5/303.7	212.5/365	265
冷料仓数量 (件) Number of cold stock bins (piece)	4	4	4	5	5	6
冷料仓容积 Volume of cold stock bins (m <sup>3</sup> )	8	8	10	10	10	13
皮带宽度宽度 Width of belt (mm)	800	800	800	1000	1000	1200
搅拌功率 Stirrer power (kW)	55	55	2*37	2*45	2*55	2*75
二级搅拌功率 Stirrer power (kW)	—	—	2*37	2*45	2*45	—
粉仓容量 Powder hopper (m <sup>3</sup> )	50	50	100	100*2	100*2	120*2
成品料仓 Finished product bin (m <sup>3</sup> )	8.5	8.5	8.5	8.5	15	15
卸料高度 Unloading height (m)	3.6	3.6	3.6	3.6	3.6	3.6
占地面积 Floor space (m <sup>2</sup> )	780	850	920/1298	960/1386	1030/1430	1150
总重 Total weight (T)	35	35	38/45	52/70	54/75	78
计量方式 Measurement ways	调速计量 Speed measurement					

- 模块化结构，人性化快速“销装式”设计，安装布置方便；
- 阶梯无衬板专利搅拌缸，超长搅拌距离，搅拌时间达到15秒，质量更好；高耐磨搅拌叶片，沸腾状相互渗透高速搅拌，物料拌合均匀。
- 首创水泥减量计量专利技术，粉料相对含量误差值为0.38%，计量更精准；粉料、骨料联锁控制，确保质量的前提下，大大节约水泥。
- 物料输送、拌缸配置安全自锁装置，人性化设计，安全性能高；采用西门子、施耐德电器元件，自动校称，调控方便。
- 高效除尘，节能环保（选配）。下沉、半封闭结构，配置挡风帘、独立分仓抽尘；高压柱塞泵、进口高压水雾喷头喷淋装置，根除粉尘飘逸。

- **Modular structure, humanization fast "dowel installation" design, and convenient installation and layout;**
- **Benched non-liner plate patented mixing cylinder, longer mixing distance, and mixing time up to 15 seconds, with better quality;**

High wear-resistant agitating vane, boiling shape, mutual penetration, high speed mixing, and even material mixing.

- **Initiative decrement measurement patented technology; error value of 0.38% for relative content of powder; more accurate measurement;**

Interconnected control of powder and aggregate, significantly saving cement under the condition ensuring the quality.

- **With safety self-locking devices installed at material handling and mixing bowl configurations, humanization design and high safety performance can be ensured;**

Siemens and Schneider electric components are used; besides, the system is able to conduct automatic correction and measurement, facilitating adjustment and control.

- **High efficiency and dust removal; energy-saving and environmental protection (optional).**

Sinking and semi-enclosed structure is equipped with windshield curtain, and independent bin dust-exhaust system; High-pressure plunger pump, and imported high-pressure water mist sprayer device are used to eliminate flying dust.



快速“销装式”结构  
Fast "dowel installation" design



阶梯搅拌缸  
Step mixing bowl



高精度电子秤  
High-precision electronic scale



减量计量的专利技术  
Measurement patented technology



下沉式封闭结构  
Sinking and enclosed structure

# HZS系列水泥混凝土搅拌设备

## HZS series Cement concrete mixing plant

- 高效：国内最先进的搅拌技术，运转平稳、均匀搅拌，混凝土质量高；
- 环保：搅拌层计量层密封，降低噪音和防止粉尘外溢，负压集中收尘，零排放；皮带机密封防雨棚及砂石料场半封闭，减小粉尘污染对环境的影响。

### 设备技术参数 Equipment technical parameters

型号 Type	HZS60	HZS75	HZS90	HZS120	HZS160	HZS180
额定生产能力 Capacity rating (m <sup>3</sup> /h)	60	75	90	120	160	180
装机功率 Installed power (kW)	78	100	127	188	240	255
骨料仓数量 (件) Number of aggregate storage bin (pieces)	3	4	4	4	4	4
骨料仓容积 Volume of aggregate storage bin (m <sup>3</sup> )	6	8	12	12	15	20
骨料最大粒径 Maximum particle size of aggregate (mm)	60~80					
搅拌主机型号 Mixing host model	JS1000	JS1500	MAO2250/1500	MAO3000/2000	MAO4500/3000	MAO4500/3000
粉仓容量 Capacity of powder hopper (T)	50	80	100	100	150	200
粉仓数量 (个) Number of powder hopper (pieces)	2	2	2	3	4	4
卸料高度 Unloading height (m)	3.8	3.8	3.8	4.0	4.1	4.1
骨料计量精度 Measuring precision of aggregate	± 2%					
水泥计量精度 Measuring precision of cement	± 1%					
水计量精度 Measuring precision of water	± 1%					
外加剂计量精度 Measuring precision of additives	± 1%					

- High efficiency: most advanced mixing technology at home ensures stable operation, even mixing and high-quality concrete;
- Environmental protection: the mixing layer and measurement layer are sealed to reduce noise and prevent dust from overflowing; negative pressure collects dust, and realizes zero emissions; The belt conveyor is sealed, and weather enclosure and sand stocking yard are semi-closed, which can reduce dust pollution and overcome environmental impact.



搅拌层计量层密封，负压集中收尘，零排放  
The mixing layer and measurement layer are sealed; negative pressure collects dust, and realizes zero emissions;





振兴路通4000H型整体式沥青混合料再生设备  
4000H type monolithic asphalt mixing recycling plant of the Zhenxing Lutong company



泰国曼谷2000H型整体式沥青混合料再生设备  
2000 type monolithic asphalt mixing recycling plant in Bangkok, Thailand,



贵州遵义4000H整体式沥青混合料再生设备  
4000H type monolithic asphalt mixing recycling plant in Zunyi City, Guizhou



济源路通2000H型整体式沥青混合料再生设备  
2000H type monolithic asphalt mixing recycling plant in Jiyuan City, Lutong



昌恒市政2000H型整体式沥青混合料再生设备  
2000H type monolithic asphalt mixing recycling plant in municipal of Chang heng



宁夏华晟3000H型整体式沥青混合料再生设备  
3000H type monolithic asphalt mixing recycling plant of the HuaSheng company, Ningxia



郑州顺源鑫4000H型沥青混合料搅拌设备  
4000H type environmental asphalt mixing plant of Shunyuan xin, zhengzhou



河南鑫龙路桥3000H型整体式沥青混合料再生设备  
3000H type monolithic asphalt mixing recycling plant of the Xin dragon bridge company



邓州市公路局4000H沥青混合料搅拌设备  
4000H type asphalt mixing plant  
of Dengzhou highway bureau



威远路桥4000H沥青混合料搅拌设备  
4000H type asphalt mixing plant  
of the Weiyuan Road & Bridge company



嘉禾路桥2000H型沥青混合料搅拌设备  
2000H type environmental asphalt mixing plant  
of Jaheluqiao Road & Bridge company



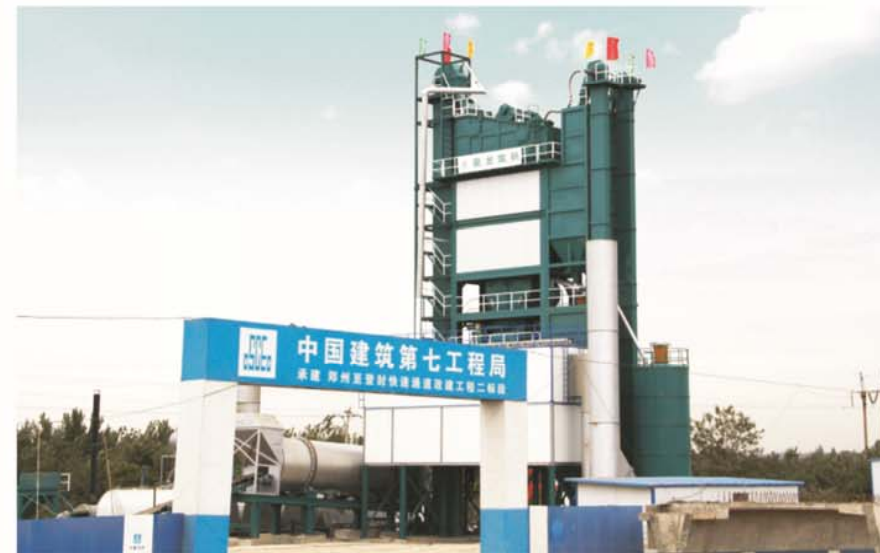
中交一公司4000型沥青混合料搅拌设备  
4000 type asphalt mixing plant  
of CCC First Highway Engineering Co., Ltd.



蒙新高速项目4000型沥青混合料搅拌设备  
4000H type asphalt mixing plant  
of the mengxin high-speed project



黑龙江依七高速4000型沥青混合料搅拌设备  
4000 type asphalt mixing plant  
of the Yiqi high-speed project



郑登快速通道4000型沥青混合料搅拌设备  
4000 type asphalt mixing plant of Yongcheng City-Dengfeng Expressway



中铁十局4000型沥青混合料搅拌设备  
4000 type asphalt mixing plant  
of China Railway No. 10 Engineering Group Co., Ltd.



中交二航局4000型沥青混合料搅拌设备  
4000 type asphalt mixing plant  
of the Second Harbor Engineering Company



登封公路局4000H型沥青混合料搅拌设备  
4000H type environmental asphalt mixing plant  
of highways agency, dengfeng



新郑公路局3000H型沥青混合料搅拌设备  
3000H type environmental asphalt mixing plant  
of the Road Xinzheng City



埃塞俄比亚1500型沥青混合料搅拌设备  
1500 type asphalt mixing plant of Ethiopia

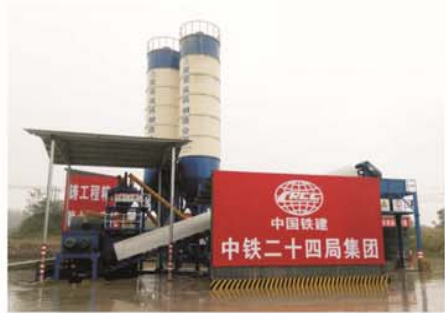


泰国1200型沥青混合料搅拌设备  
1200 type asphalt mixing plant of Thailand



菲律宾1000型沥青混合料搅拌设备  
1000 type asphalt mixing plant of Philippines

## 工程案例 Project case



中铁24局WBC600型稳定土厂拌设备  
WBC600 stabilized soil mixing plant of  
China Railway 24 Bureau Engineering Group Co., Ltd.



中铁八局WBC600型稳定土厂拌设备  
WBC600 stabilized soil mixing plant  
China Railway No. 8 Engineering Group Co., Ltd.



中建七局WBC1000H型稳定土厂拌设备  
WBC600 stabilized soil mixing plant  
China Construction Seventh Engineering Division, Corp. LTD



郑州港区JWBC800H型稳定土厂拌设备  
WBC800 stabilized soil mixing plant  
of Air port, Zhengzhou city



濮阳市政JWBC600H型稳定土厂拌设备  
JWBC600 H stabilized soil mixing plant  
of municipal administration, puyang city



坦桑尼亚WBC500型稳定土厂拌设备  
WBC600 stabilized soil mixing plant  
In Tanzania



巴基斯坦WBC600型稳定土厂拌设备  
WBC600 stabilized soil mixing plant in Pakistan



肯尼亚WBC600型稳定土厂拌设备  
WBC600 stabilized soil mixing plant in Kenya



登封WBC600型稳定土厂拌设备  
WBC600 stabilized soil mixing plant in Dengfeng city



G207国道JWBC600H型稳定土厂拌设备  
WBC600H stabilized soil mixing plant of G207 national highway



河南路桥2HZS90型水泥混凝土搅拌设备  
2HZS90 type series Cement concrete mixing plant  
of Henan Road & Bridge Construction Group

## 诚信服务 Integrity service

亚龙公司一贯秉承敬业、诚信、创新、奉献的企业精神，以最优质的产品、最贴心的服务，满足用户不同的需求。

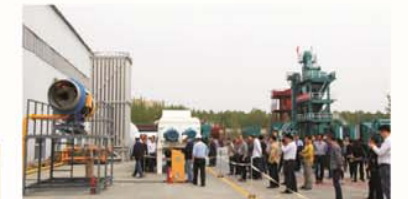
Holding the enterprise spirit of dedication, integrity, innovation and devotion, Yalong Company always satisfies customers with excellent products and satisfying services.

### 亚龙筑机沥青搅拌设备修理操作工培训鉴定班



## 十项满意服务 Ten satisfying service items

- 提供行业咨询;  
Provision of industry consulting;
- 推荐最佳配置;  
Recommendation of optimal equipment configuration;
- 规划场地建设;  
Planning of field construction;
- 定制个性产品;  
Personalized product customization;
- 免费安装调试;  
Installation and debugging for free;
- 现场操作培训;  
Planning of field operation;
- 远程技术协助;  
Remote technical assistance;
- 定期回访用户;  
Regular visits;
- 供应厂价配件;  
Accessory supply of manufacturer;
- 指导搬迁维护;  
Equipment relocation and guidance;
- 升级改造配置。  
Equipment upgrading and renovation.



## 贴心服务 Intimate service

终身跟踪服务 超越用户愿望  
Life-long tracking service, surpassing user desires;

7×24小时服务 常年提供厂价配件  
7\*24 hours seamless docking, providing factory price accessories all the year round;

亚龙10项满意服务 使您的投资高枕无忧。  
Yalong's 10 satisfying services make your investment to be rest easy.

